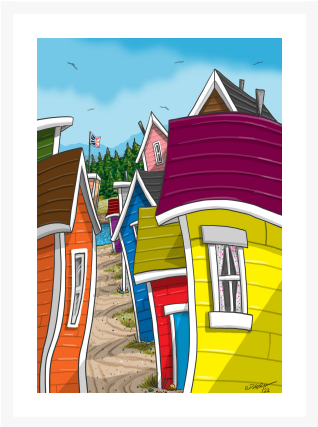




Close Quarters

Product Images



Description

Printed on canvas - Custom made to order. Allow **2-4 WEEKS** for production

Additional Information

Dimensions	38x60
Availability Date	Dec. 31, 2009

Products in this set



Close Quarters

38x60

Printed on canvas – Custom made to order. Allow **2-4 WEEKS** for production



Close Quarters

30X45

Printed on canvas – Custom made to order. Allow **2-4 WEEKS** for production



Close Quarters

22X28

Printed on canvas – Custom made to order. Allow **2-4 WEEKS** for production



Close Quarters

16X20

Printed on canvas – Custom made to order. Allow **2-4 WEEKS** for production